

TIANJU IOT



Sharing Economy

Power Bank OEM/ODM

4000+ Daily Output

20+ Patents

Table of Contents Navigation

Help customers quickly locate the corresponding product page, facilitating business communication and quotation confirmation

Charging cabinet

Shared power bank

Smart Cable

OEM / ODM

Global delivery

01 Brand Overview and Quick Guide	P2
02 Corporate Profile	P3
03 OEM/ODM Customization	P4
04 Daily Output & Certifications (19)	P5
05 TJ8001 5000mAh (Catalog Parameters)	P6
06 TJ8002A 8000mAh (Catalog Parameters)	P7
07 TJ8002A2 8500mAh (Catalog Parameters)	P8
08 TJE067B 10000mAh (catalog specifications)	P9
09 4-Port Cabinet Catalog (White & Orange, Stackable 12/16-Port)	P10-12
10 6-Port Cabinet Catalog (White/Orange/Yellow, Stackable)	P13-14
11 8-Port Cabinet Category (Stackable / All-in-One / Specifications)	P15-16
12 Large Cabinet Machine Series (Orange/Blue)	P17-18
13 Shared Charging Cable Category (Basic / Wall Integrated / UK Standard / Car Use)	P19-20
14 Smart Vending Machine Series	P21-22
15 Business Cooperation and Delivery Terms	P23

Deep Customization (OEM/ODM) Capabilities

Hardware customization

Overall appearance / Color scheme / Screen-printed logo / Laser engraving.
Battery cell capacity (5000-10000mAh) and output protocol configuration.
Custom structural components (molds can be developed).
Packaging color box / instruction manual / sticker complete design.

Software & Ecosystem

Independent Brand Backend / Multilingual / Role Permissions .
Real-time Device Monitoring & Alerts / Order and Revenue Sharing System.
API integration (self-operated App/mini program/local wallet).
OTA Firmware Upgrade & Remote Diagnosis

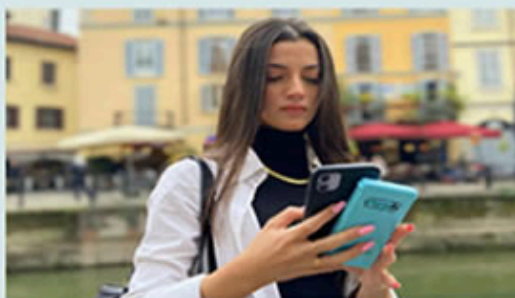
Sample cycle 3-7 working days


Batch delivery time 15-30 days

Port of shipment Shenzhen

Payment method T/T (Regular)

Hardware customization,
software ecosystem, compliance and delivery, supporting
the rapid implementation of foreign trade projects



 **Get detailed quotes & catalog manuals | 24h technical support | 12-month warranty | FOB/CIF/EXW**

Project Collaboration Process: Requirement clarification → Sample confirmation → Small batch verification → Mass production → Shipping and after-sales closed loop. Supports outputting plug, voltage, payment, and certification adaptation lists by country/region to ensure project launch efficiency and delivery consistency.

QUICK OVERVIEW



Brand Overview - Quick Guide

First understand the brand's strength, then move on to the product section; this page integrates the brand overview and delivery capabilities

Company positioning

Tianju IoT focuses on shared charging and smart terminals, providing integrated services from hardware design and software platforms to production and delivery, supporting the implementation of projects worldwide.

Core data

19 patents · 3 production lines · 4,000 units/day capacity · 1,000 operator cases

OEM/ODM process

Requirement Confirmation → Industrial Design → Prototype Verification → Small Batch Trial Production → Mass Delivery → After-sales Support

Quick Contact

Official website: www.tianjuwulian.com Support project consultation, parameter customization, quotation, and sample coordination

FACTORY TOUR

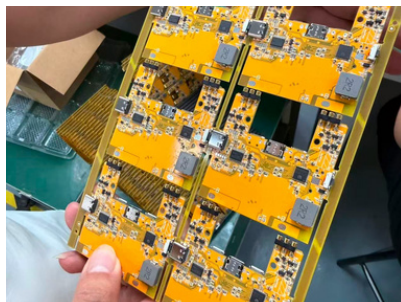


Production Line and Delivery Capacity

3 assembly lines, standardized inspection process, peak capacity of 4,000 units/day, supports large-scale stable delivery



SMT and complete machine assembly lines: standard operating instructions, batch traceability



Quality Inspection Station: full coverage of aging tests, functional tests, and appearance channel to ensure timely random checks



Packaging and shipping area: separate orders by region and delivery

Key processes: IQC incoming material inspection → IPQC in-process inspection → OQC outgoing inspection → aging test → packaging verification



Original Factory · Hardcore Strength

TianjuloT(Shenzhen) Co.,Ltd. | Ahigh-terenterpriseintegratingresearch and development, production, sales, and software services

19
corepatent

3 items
Assemblyline

4000+
DailyProduction
Capacity (units)

20+
Country/Region

✓ Full-chain quality control: IQC → IPQC → OQC → Aging test ✓ Compliance support: CE/FCC/RoHS/UN38.3/MSDS (provided according to model and market) ✓ Software empowerment: Independent backend / Multilingual / API / Sub- account system

💡 Support: Appearance customization · Logo screen printing/laser engraving · Capacity options · Packaging customization · Brand domain · Payment integration

CERTIFICATIONS

Certificates and Certifications (20)

Product certification, transportation compliance, systemcertification, and patent capabilities; provide corresponding certificates, test basis, and implementation standard information according to model and target market

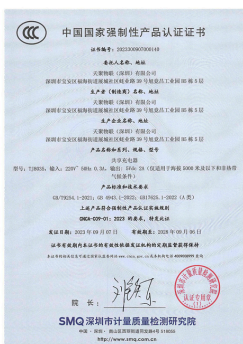
Common certification capabilities: CCC / CE / FCC / RoHS (matched according to model and market)

System Qualifications: ISO9001 / ISO14001 / ISO45001

Transport Compliance: UN38.3 / MSDS / Ocean and Air Transport Certification

Intellectual Property: Design Patent / Utility Model Patent

Terminology and Scope Explanation:CCC applies to the Chinese market; CE/FCC/RoHS, etc., are provided according to the target market and specific model. Shipping documents (UN38.3 / MSDS) and product certifications belong to different compliance dimensions and need to correspond to specific order models separately.



3C Compulsory Product Certification Certificate



Design Patent Certificate (Shared Charger)



Design Patent Certificate (Shared K-Song Style)



Design Patent Certificate (Charging Cabinet KTV Edition)



Utility Model Patent Certificate (Multifunctional Shared K-Singing)



Design Patent Certificate (Shared Charger)

★ TJ8001 5000mAh · Catalog & Specifications

Lightweightsharedpowerbankmodel | Drawstringthree-linestructure | Friendly for high-frequency rental scenarios

TJ8001 Main Recommended Model Catalog

Model: TJ8001



- TJ8001 5000mAh lightweight solution, suitable for high-frequency short-term power top-up needs
- Integrated rental structure design, supporting quick borrowing and return of counter machines
- Drawstring three-line design, balancing portability and durability

Capacity specifications:5000mAh

Product Form:Shared Rental Power Bank (Portable Version)

Cable interface:Built-in Type-C / Lightning output

Battery level display:Four-segment LED display / Four-color headlight display (compatible with two schemes)

Application scenarios:Catering stores, coffee shops, shopping malls, subway entrances, etc.

Custom support:Appearance color scheme / Silk screen / Structural details / Packaging

Compliance Support:Can be matched with CE/FCC/RoHS/UN38.3 according to market requirements

Core parameters (can be confirmed according to the final specification sheet)

Model	TJ8001
Nominal capacity	5000mAh
Model positioning	Portable Shared Rental Model
Output interface	Type-C / Lightning
Input method	Type-C or cabinet contact recharge
Appearance structure	Rounded corners for slip resistance, easy to grip and store
Status Display	LED power indicator
Customization	Appearance, Logo, Packaging, Parameter Strategy

Operations and Scenario Suggestions

- Fast food/tea shop outlets: Frequent charging for users with short stays
- Malls and scenic spots: high mobility, efficient borrowing and returning
- Event exhibitions: temporary deployment is flexible, and power supplementation coverage is wide
- Chain brand: can unify image and rental experience

5000mAh

Portable

Rental Ready

Fast Turnover

Brand Custom

Global Delivery

Explanation:The parameters on this page are compiled based on actual shoots of TJ8001 and are presented as a catalog display version; detailed technical specifications can be fully presented on the specification sheet page (in both Chinese and English).

★ TJ8002A 8000mAh · Catalog & Specifications

Main Recommended Rental Models | Same Specifications as Datasheet | Supports Brand Appearance and Functionality Strategy Customization

8000mAh Flagship Model Catalog

Model: TJ8002A



- Specifically for shared rental scenarios, supports cabinet machine return and single machine direct charging
- Built-in Lightning / Type-C interface, compatible with mainstream phones
- Compact structure, suitable for high-frequency turnover scenarios (shopping malls/restaurants/transport hubs)

Rated capacity: 8000mAh (marketing version) / typical value 8500mAh @0.2C

Product size: 155 × 68 × 14 mm

Product weight: About 219g

Shell Material: PC ABS (Flame Retardant Rating V0)

Output parameters: 5V/3A, 9V/2.22A, 12V/1.67A (Lightning / Type-C)

Input parameters: Type-C 5V/2A; Contact input 4.75-5.25V/2A

Cell type: Lithium-ion polymer battery cell (single cell)

Environmental requirements: Operating temperature 0~45°C; humidity < 75% RH

Certification: 3C / CE (can be matched with UN38.3 / MSDS, provided according to the target market and model)

Core Specs

Model	Nominal	TJ8002A
capacity	Typical	8000mAh
capacity	Size	3.8V 8500mAh @0.2C
Weight		155 × 68 × 14 mm
Battery cell type		About 219g
Shell		Lithium-ion polymer (single cell)
Cycle life		PC ABS, flame-retardant V0
		300 times

Electrical and Environment

Lightning Output	5V/3A, 9V/2.22A, 12V/1.67A
Type-C Output	5V/3A, 9V/2.22A, 12V/1.67A
Type-C input	DC 5V / 2A
Contact input	DC 4.75-5.25V / 2A
Operating temperature	0~45°C
Storage Temperature	-10~50°C (January), -10~40°C (March)
Humidity range	< 75% RH
Warranty	3 months (non-human damage)

Business Description: For external display, the '8000mAh marketing capacity 8500mAh typical value' dual specification is used; certification and shipping documents are provided according to the target market and specific model.

★ TJ8002A2 8500mAh · Catalog & Specifications

Product catalog structure of the same level as TJ8002A | Supports custom color schemes, logo, and interface options

TJ8002A2 Main Recommended Model Catalog

Model: TJ8002A2



- Integrated Type-C and Lightning dual-output, compatible with mainstream devices
- Side Type-C charging port, accommodating both return-to-warehouse for rental cabinets and wired charging
- The body appearance supports multi-color customization, suitable for brand channel deployment

Capacity specifications: 8500mAh

Structural dimensions: 155 × 68 × 14.2 mm (as marked on the drawing)

Interface Form: Built-in dual cables (Type-C / Lightning) Type-C input

Battery level display: Four-segment LED display / Four-color headlight display (compatible with two schemes)

Body material: PC ABS (supports multi-color spraying/injection molding)

Deployment Scenario: High-frequency borrowing and returning scenarios such as catering, supermarkets, cinemas, and transportation hubs

Customization Capability: Logo silk screen / Packaging / Firmware strategy / Regional certification

Structure and appearance parameters

Model	TJ8002A
Nominal capacity	2
Length, width, thickness	155 × 68 × 14.2 mm
Output line	Type-C + Lightning
Input port	Type-C
Battery indicator	4-segment LED
Body craftsmanship	Rounded anti-slip case, portable and durable
Color scheme	Supports brand custom colors

Placement and Operation Suggestions

- Linked with shared locker machines: supports return-to-warehouse contact charging and store fast turnover
- Chain brand deployment: can unify appearance style and brand identity
- Overseas Channel Expansion: Certification and interface strategies can be matched according to regional needs
- Maintenance convenience: centralized interface layout, facilitating inspection and fault localization

8500mAh

Type-C In

Dual Cable
Out

Rental
Ready

Brand
Custom

Mass
Production

Additional Explanation: This chapter is reorganized based on the TJ8002A2 specification data, covering the main drawings and key structural information; electrical parameters can be output in unified bilingual fields according to the final version of the technical sheet.

★ TJE067B 10000mAh · Catalog & Specifications

High-capacity fast charge model | 22.5W multi-protocol | Suitable for high-demand power replenishment scenarios

TJE067B Main Recommended Model Catalog

Model: TJE067B



- 10000mAh large capacity, meets long outings and heavy power usage scenarios
- 22.5W fast charging fully compatible (PD/QC/FCP/AFC, etc.)
- Dual-line output Fast recharge, compatible with shared rental systems

Capacity specifications: 10000mAh

Fast charging capability: 22.5W Multi-Protocol Compatible

Interface Form: Built-in Type-C / Lightning output

Battery level display: Four-segment LED display / Four-color headlight display (compatible with two schemes)

Scene positioning: transportation hubs, cultural and tourist attractions, shopping malls, and cinemas

Custom support: Logo, casing color, packaging, and software strategy

Compliance Support: 3C / CE / RoHS / UN38.3 (matched according to region)

Core parameters (based on actual nameplate information)

Model	TJE067B
Nominal capacity	10000mAh
Input	5V=3A / 9V=2A (18W Max)
Type-C output	5V=3A / 9V=2A / 12V=1.67A
Lightning output	5V=2.4A / 9V=2.22A / 12V=1.5A
Fast charging protocol	PD / QC / FCP / AFC / SCP / PPS / UFCS

Scene and Operation Suggestions

- High-traffic locations: Higher capacity reduces range anxiety and enhances the re-borrowing experience
- Business/Travel crowd: Supports fast charging protocol, reducing waiting time
- Culture, tourism, and large-scale events: catering to long-duration outdoor power needs
- Brand upgrade promotion: Large-capacity models enhance service level

10000mAh

22.5W

Multi-Protocol

PD/QC

Rental Ready

Brand Custom

Explanation: TJE067B page parameters prioritize using the actual nameplate fields, and key specifications have been covered; the complete specification version can supplement details on dimensions, weight, environment, and certification.

★ Four-port (Stackable) · Four-port Cabinet Machine Atlas

4-compartment shared locker | Serves as the basic module of the four-unit stacked series | Suitable for front desks and small store scenarios

Expansion route (differentiated): The same structure can be gradually expanded according to passenger flow from 4 lanes → 8 lanes → 12 lanes → 16 lanes → 24 lanes → 32 lanes; no complete machine reconstruction is needed, making it easy to implement in stages while maintaining a consistent appearance and operation and maintenance system.

Four-Slot Charging Cabinet Smart Cabinet 4-Slot



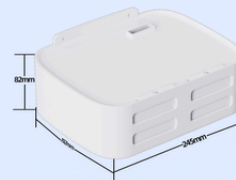
4-Port White · Front View



4 mouths of white · Perspective ①



4 mouths of white · Perspective ②



4-Port White · Combination Diagram

Design Highlights: The four-port version offers flexible deployment and takes up less space, suitable for bars, reception areas, and small store locations; it supports customized appearance colors, brand veneers, and promotional copy, adaptable to lightweight deployment strategies.

Four-slot charging cabinet (4-Slot Orange) Smart Cabinet 4-Slot Orange



4-Piece Orange · Front View



4 Orange Mouths · Perspective ①



4 Orange Mouths · Perspective ②



4 Orange Mouths · Perspective ③

Design Highlights: The orange version continues the same structure and functions as the four-door cabinet, with stronger visual recognition; suitable for brand events, store themed displays, and high-visibility locations.

★ Eight slots (stackable) · Stacking Machine Illustrated Catalog

Eight-port stackable model page(44) | Used for displaying eight-port expansion

port stacking (4 ports 4 ports) Stacked Cabinet 8-Slot



8 ports · Front view



8 ports · Perspective ①



port stacking (4-port 4-port orange) Stacked Cabinet 8-Slot Orange



Oranges · Front View



8 Orange Mouths · Perspective ①



8 Orange Mouths · Perspective ②

Design Highlights: The 8-port orange version has the same structure as the white, emphasizing high-recognition brand display; suitable for

★ Four ports (stackable) · 8/12/16-port expansion diagrams

Four-PortSeriesStackingExpansionPage | Expandto8/12/16PortsBasedonFour-PortModule

12-port stacking (4-port 4-port 4-port)

Stacked Cabinet 12-Slot



12 mouths · Front view



12 mouths · Perspective ①



12 mouths · Perspective ②



12 ports · Layered Combination Diagram

Design highlights: The stacking solution supports smooth expansion from 8 ports (4 4) to 12 ports (4 4 4), with gradual upgrades based on point-of-sale customer flow; it also simultaneously supports brand facing, promotional copy, and operational strategy customization.

12-port stacking (4-port 4-port 4-port orange)

Stacked Cabinet 12-Slot Orange



12 Oranges · Front View



12 Orange Mouths · Perspective ①



12 Orange · Perspective ②

Design highlights: The 12-port orange version corresponds to high-traffic locations, continuing stacking expansion capability and unified operational visuals; suitable for themed placements, brand events, and high-visibility deployment in stores.

16-port stacking (4-port 4-port 4-port 4-port)

Stacked Cabinet 16-Slot



16 ports · Perspective ①



16 mouths · Perspective ②



16 mouths · Perspective ③

The 16-unit stacked solution is used for higher traffic locations, improving turnover efficiency while maintaining a consistent visual language; it supports incremental expansion according to the scale of the site and continues with the same brand finishes and customized operational copy.

★ Six-Mouth Series (Including Overlays) · Catalog

6-compartment shared cabinet machines and stacked expansion | Unified under the second major module of cabinet machines

6-door cabinet (white) Smart Cabinet 6-Slot White



6-Port White · Front View



6 mouths of white · Perspective ①



6 mouths of white · Perspective ②



6-port white · base diagram

Design Highlights: The 6-compartment white cabinet balances capacity and compact size, suitable for medium-traffic stores and front desk locations; supports brand overlays, exterior color customization, and operational copy customization.

6-port cabinet machine (orange) Smart Cabinet 6-Slot Orange



6-port Orange · Main View



①



②

6 Orange Mouths · Perspective 6 Orange Mouths · Perspective

Design highlights: The 6-port orange version maintains the same structure and functionality, suitable for themed stores, brand events, and high-visibility locations.

★ Six-Mouth Series (Including Overlays) ·

Catalog

6-compartment shared cabinet machines and stacked expansion | Unified under the second major module of cabinet machines

6-port cabinet machine (yellow · large lens version)

Big-Lens

Smart Cabinet 6-Slot Yellow



6-port yellow · front view



6 mouths of yellow · Perspective ①



6 mouths of yellow · Perspective ②



6 mouths of yellow · Perspective ③

Design Highlights: The yellow large-lens version enhances brand recognition on the same structural basis, suitable for event locations and high-exposure scenarios.

6-port stacked with 12-port (yellow)

Stacked Cabinet 12-Slot Yellow (6+6)



6 6 Yellow · Front View



6 6 Yellow · Perspective ①

★ TJ8053-8 Eight-Port Charging Cabinet · Stackable Catalog

Eight-portstackabledisplaypages(8053(1)~8053(4)) | Fourimagesdisplayedatequalsize

Eight-port charging cabinet machine (stackable)

Stackable Smart Cabinet 8-Slot



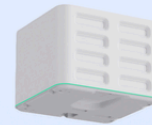
8 ports can be stacked · Front view



8 ports can be stacked · View ①



8 ports can be stacked · View ②



8 ports can be stacked · View ③

Design Highlights: The 8-port stackable model supports modular expansion and a unified visual language, balancing capacity enhancement with brand display effects.

TJ8053-8 Technical Specifications and Application Scenarios

Compiled based on TJ8053-8 specification: Structure, Power, Communication, Interaction, and Safety Requirements

Cabinet and structural parameters

Model	TJ8053-8
Compatible with power bank	TJ8001/TJ8002 Series
Size	252 x 230 x 340 mm
Material	ABS+PC
Flame retardant rating	V0
Net weight	3.28kg
Position	8 compartments
Opening position method	After scanning the code for verification, the electromagnetic lock automatically pops open

Power and Operational Capability

Input voltage	AC 100-240V, 50/60Hz
Single-end output	DC 5V / 2A
Total machine power	24W
Payment method	WeChat/Alipay and other QR code payments
Communication ability	Remote Status Reporting and Operations Management
Interactive ability	Scan to rent, return recognition, fault alert
Application scenario	Shopping mall/Airport/Train station/Food & Beverage/Hotel

Explanation: This chapter focuses on presenting the core technical parameters and application highlights of the TJ8053-8, making it easy for customers to quickly select models and compare solutions.

CHAPTER 13B

★ TJ8053-8 Eight-port stacking sixteen-port · Stackable catalog

Eight-port stacked sixteen-port display page | Three images of equal size display

Eight mouths stacked, sixteen mouths (stackable) Stackable Smart Cabinet 8-to-16 Slot



8-port stacked 16 · Front view



①



②

8 ports stacked 16 · Perspective 8 ports stacked 16 · Perspective

Design Highlights: The eight-port stacked sixteen-port solution increases storage density within a limited footprint, making it suitable for continuous operation at medium to high traffic locations.

CHAPTER 13C

Eight-port stacked twenty-four-port display page | Three images displayed horizontally in one row

Eight mouths stacked on twenty-four mouths (stackable) Stackable Smart Cabinet 8-to-24 Slot



8-port fold 24 · Perspective ①



②



8-port fold 24 · Perspective ③

8 ports stacked 24 · Perspective

Design highlights: The eight-port stacked twenty-four-port solution further enhances

★ Large Cabinet Series · Orange Catalog

Large cabinet unit(orange) catalogpage | Displayed according to the existing cabinet unit catalog logic | Blue pages with the same structure can be directly added later

Large cabinet machine (orange) Large Cabinet Station Orange



Large Cabinet Orange · Front View



Large cabinet machine orange ·
Perspective ①



Large cabinet machine orange ·
Perspective ②



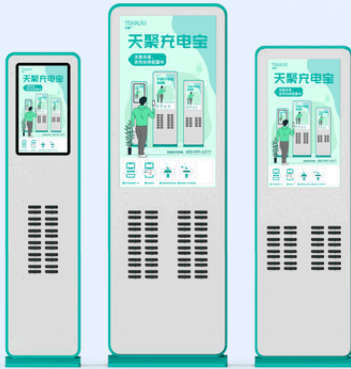
Large Cabinet Orange · Perspective ③

Design highlights: The large cabinet unit in the orange scheme features a highly recognizable appearance, suitable for high-exposure deployment scenarios such as shopping malls, parks, and transportation hubs.

★ Large Cabinet Series · Blue Catalog

Large cabinet unit (blue/cyan) catalog page | Same layout as the orange version, making it easy for customers to compare horizontally

Large cabinet machine (blue) Large Cabinet Station Blue



Large cabinet machine blue · Front view



Large Cabinet Machine Blue · Perspective ①



Large Cabinet Machine Blue · Perspective ②



Large Cabinet Machine Blue · Combination Diagram

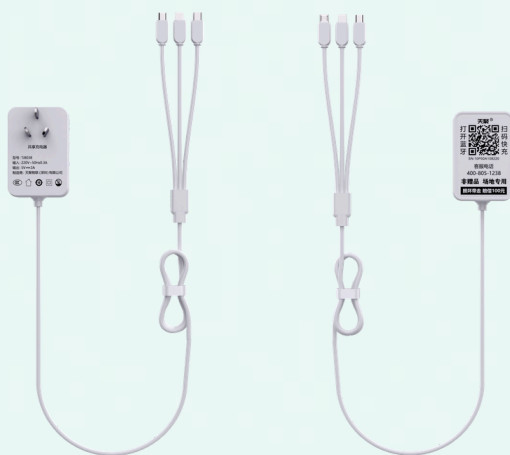
This page is the catalog of large cabinet machines (blue), following the same layout and naming rules as the orange pages, to facilitate a consistent external presentation.

Shared charging cable

Fully self-service operation, merchants do not need dedicated personnel to manage; localized adaptation for the Hong Kong market; emergency password unlock to ensure usability; 3-in-1 interface covering mainstream models

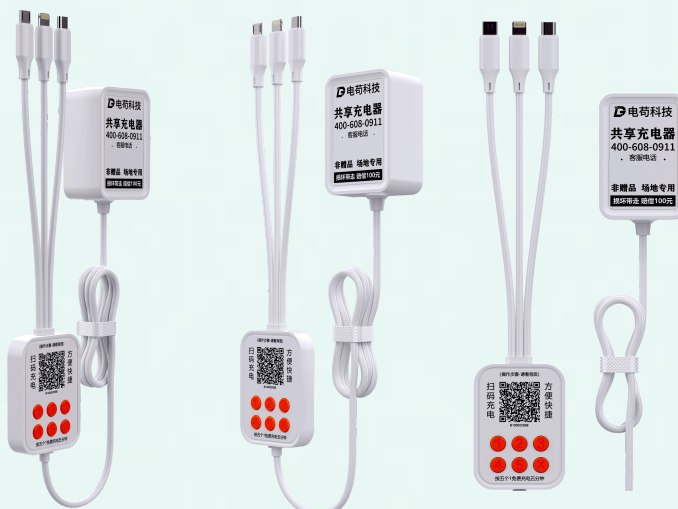
Market Adaptation Instructions: UK/HK plugs and power versions are shipped according to the target market; payment and backend capabilities are configured by region (such as language, channel, and settlement rules), based on the project confirmation list.

Core Difference Comparison (In-Vehicle Model): Common solutions mostly use a single power input (cigarette lighter only); the TJ8028 supports dual inputs of cigarette lighter and USB/Type-C, offering greater flexibility in deployment across different vehicle models and installation conditions, and can continue operating when a single interface is limited.



Main View

Perspective ①



Main View

Perspective ①

Perspective ②

Shared Charging Cable · Basic Version

SharedChargingCable - BasicEdition

Basic style **One input, three outputs**

Self-service operation **Commercial Deployment**

Input/Power AC 220V / 50Hz (subject to the actual nameplate)

Output/Interface Android / Apple / Type-C

Certification CCC、CE、FCC、RoHS

Basic shared charging cable, designed with a one-to-three interface, suitable for regular high-frequency charging scenarios in restaurants, supermarkets, stores, and the like.

Universal one-to-three interface: supports Android, Apple, and Type-C, covering the main models' charging needs.

Lightweight and easy to deploy: easy to install and maintain, compatible with regular commercial locations for rapid setup.

Self-service rental operation: supports QR code scanning and Bluetooth unlocking, with back-end statistics for orders and revenue data.

Supports logo/color/packaging/software customization

Shared charging cable · Wall charger integrated model

SharedChargingCable - WallChargerType

Three images of the same style **Wall-mounted all-in-one**

One input, three outputs **5V/2A** **CCC/CE/FCC/RoHS**

Input/Power AC 220V / 50Hz (subject to the actual nameplate)

Output/Interface Android / Apple / Type-C

Certification CCC、CE、FCC、RoHS

Wall-mounted all-in-one shared charging cable, the three pictures show the same product from different display angles; supports one-to-three output (Android/Apple/Type-C), suitable for deployment at high-frequency locations.

Fully self-service operation, merchants do not need dedicated staff to manage it, and can obtain continuous revenue with low investment.

Localized adaptation, with plugs and payment methods suited to the Hong Kong market, resulting in high user acceptance. Emergency password unlock design to prevent users from being unable to use it due to Bluetooth or network issues, reducing customer complaints.

Multiple interface compatibility, covering

Shared charging cable

Other product groups and parameter descriptions (continued page)

Shared charging cable · British standard

SharedChargingCable - UKStandard

UK plug **One input, three outputs**
Dual Unlock Mode **BS 1363**

Input/Power AC 220V / 50Hz (UK plug)
Output/Interface Apple / Type-C / Android
Certification CCC、CE、FCC、RoHS

The UK standard shared charging cable uses a British BS 1363 plug and universal operating logic, suitable for deployment in regions with UK standards.

Compatible with UK standards: Uses the British BS 1363 standard large three-pin plug, matching UK socket specifications, no additional adapter required.

Full interface coverage: Comes with a one-to-three cable, including Lightning/Type-C/Micro-USB interfaces, compatible with the vast majority of smartphones on the market.

Dual Unlock Mode: Supports unlocking via Bluetooth payment by scanning a QR code, and is also equipped with physical numeric keys for emergency unlocking by entering a password, preventing issues with bluetooth malfunctions from making it unusable.

Supports logo/color/packaging/software customization

Shared Charging Cable · Car Model (Dual Series Combined)

SharedChargingCable - CarEditions(Merged)

In-vehicle dual series **Dual input compatible**

Anti-theft lock Self-service operation

Input/Power Cigarette Lighter / USB / Type-C (depending on model and version)
Output/Interface Android / Apple / Type-C
Certification CCC、CE、FCC、RoHS

This plan integrates the classic anti-theft vehicle model with the TJ8028 dual-input vehicle model, providing a more comprehensive commercial charging capability for ride-hailing cars, taxis, and new energy vehicle fleets, while taking into account installation compatibility, stable operation, and passenger charging experience.

More comprehensive commercial adaptation: covers power extraction methods such as cigarette lighter and USB/Type-C, allowing quick deployment in both environments.



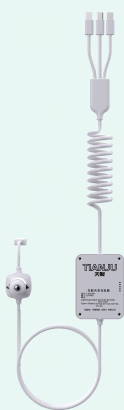
Main View



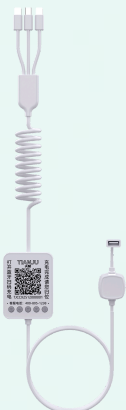
Perspective ①



Perspective ②



Main View




Perspective ①

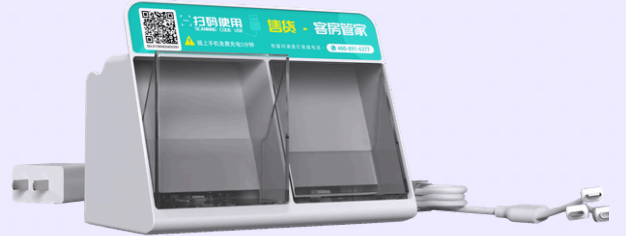


Main View



Perspective ①

 **Smart vending machine**
ProductImageGallery



Smart vending machine

Core Values, Application Scenarios, and Implementation Recommendations

Solution Comparison (Differentiation)

Traditional large vending machines usually require fixed locations and renovation support; this solution supports lightweight desktop/wall-mounted deployment, plug-and-play use, making it more suitable for hotels, guesthouses, office locations, and small to medium stores for rapid replication and installation.

Core Values (Overseas Pain Point-Oriented)

This device is different from traditional large vending machines, does not rely on major site renovations, supports desktop placement and wall-mounted installation, and can operate simply by plugging in. It can quickly enter fragmented overseas scenarios such as small and medium-sized stores, homestays, and office spaces. Multiple independent compartments of various sizes can flexibly accommodate snacks, beverages, beauty samples, 3C accessories, adult products, and emergency daily necessities, achieving a light-asset operation model of 'one device covering multiple categories.'

In high labor cost markets such as Europe and America, Southeast Asia, the Middle East, and Latin America, the equipment can operate unmanned 24/7, reducing reliance on cashiers and on-site staff, extending business hours, and continuously generating revenue during non-business hours. The multilingual backend supports remote viewing of inventory, orders, revenue, and equipment status, suitable for cross-store management, cross-region joint operations, and cross-border agency operations. Payment capabilities can be connected to international credit cards and local mainstream electronic payment channels by region, lowering the payment barrier for consumers and improving conversion efficiency.

The equipment uses independently controlled compartment locks and traceable transaction logic, combined with a durable structure and low-fault design, allowing it to balance loss prevention and low maintenance in complex overseas operating environments. Its exterior style is lightweight, friendly, and easy to integrate into settings that emphasize ambiance, such as hotels, guesthouses, cafes, and fitness spaces. In addition to product retail, it can also incorporate value-added models such as advertising placement, shared rentals, and themed merchandise sales, increasing the revenue ceiling per location.

Key Application Scenarios (Overall)

Hotels/guesthouses/short-term rental apartments are one of the key recommended scenarios, meeting guests' high-frequency demand for emergency and instant consumer goods; co-working spaces and office buildings are suitable for supplying coffee, snacks, and 3C accessories; gyms and nighttime entertainment scenes can maintain continuous sales without increasing labor; retail service stores and gas stations can cover incremental sales during closed hours; transportation hubs, hospitals, campuses, and community centers can fill the 24-hour convenience retail gap; in emerging markets such as Southeast Asia, Latin America, the Middle East, and Africa, it is also suitable for small and micro entrepreneurs to quickly set up with low investment and operate through revenue-sharing cooperation.

Suggestions for Implementation

It is recommended to advance in three stages: 'single-point trial operation → multi-point replication → regional joint operation.' First, verify product selection and replenishment rhythm with a small-scale location, then expand deployment density according to customer flow segmentation.

Business Cooperation and Delivery Terms

ForeignTradeB2BStandardCooperationInformation(AdjustablebyProject and Region)

Transaction and Delivery

MOQ (Minimum Order Quantity)	Supports sample orders and bulk orders (confirmed by model)
Sample cycle	Approximately 3-7 working days (depending on the complexity of the configuration)
Batch delivery time	Approximately 15-30 days (depending on the order quantity and configuration)
Trade terms	FOB / CIF / EXW (Incoterms 2020)
Port of shipment	Shenzhen (can be arranged according to the actual booking)
Payment method	T/T (regular) / other methods can be negotiated

Services and Support

OEM/ODM Services	Appearance, Logo, Packaging, Firmware Strategy, Back-end Configuration
Certification and Documents	Provide CE, FCC, RoHS, UN38.3, MSDS, and other documents according to model/market
After-sales support	Remote technical support Troubleshooting Spare parts supply
Warranty Policy	Execute according to the contract and product type (supports project-based agreements)
Project Collaboration	Support parameter confirmation, sample review, mass production follow-up, and delivery review
Contact Information	Email/phone/official website liaison, supporting timezone-based communication arrangements

Explanation:The above terms are a standard reference version, and the final version shall be subject to the PI/contract. For different countries and regions (plugs, voltage, payment, compliance), a project-based adaptation list can be provided.

Overseas Opportunities (Sharing Economy)

The core opportunity for the sharing economy going overseas lies in the 'ability to provide integrated solutions': integrating equipment, payment, backend, and operations into a replicable implementation model. Compared with merely selling individual products, suppliers who can offer scenario-based solutions and continuous services are more likely to help overseas clients start with low barriers and expand steadily.

Business Contact Information

 Phone: 400-862-3216

 Email: 2230582764@qq.com

 Official website: tianjuwulian.com

Tianju IoT · Shenzhen Bao'an

| Phone: 400-862-3216 | Email: 2230582764@qq.com

Official website:<https://tianjuwulian.com> | © 2025 Tianju IoT | This catalog is for reference only, final specifications are subject to the contract | Print date: 2026/4/29